

Installation Instructions & Use Recommendations

FMS Accessories – Zebra Printer Box - All Mounts

These instructions must be read carefully and thoroughly **before**

beginning work. FMS Solutions, LLC accepts no liability for damage caused by failure to observe the installation instructions or use recommendations.

Installation of this accessory does not change the factory specified load limits for the motorcycle.

Forward Low Mount: FMS Accessory Zebra printer boxes are made from powder-coated heavy duty aluminum to resist corrosion. The mounting brackets are produced from powder-coated steel and are connected via five bolts. This does enable the case to be replaced in the event it becomes damaged. Attach the provided Velcro to the printer and the box to secure the printer from vibration / damage.

Attach the mounting bracket to your BMW R 1200/1250 RT-P model right front protection bar using the three M5 x 12 bolts provided. Position the Zebra box on the mounting bracket and install the two bolts for the bottom support. Snug the box against the upper mounting point and mark & drill the two holes for the two upper bolts to secure the box. Tighten all four bolts to secure holster mount to protection bar. You can sandwich a Lidar gun holster mount together with the forward low mount – use M5 x 14 mm screws to compensate for the extra material thickness.



Forward High Mount: FMS Accessory Zebra printer boxes are made from powder-coated heavy duty aluminum to resist corrosion. The mounting brackets are produced from powder-coated steel and are connected via five bolts. This does enable the case to be replaced in the event it becomes damaged. Attach the provided Velcro to the printer and the box to secure the printer from vibration / damage.

Attach to your BMW R 1200 RT-P model which already had the BMW adapter plate installed (an extra hand is helpful). Sandwich the forward mount between the adapter plate and the mount for the Lidar gun using the existing M6 x 1.0 studs. Two M6 Torx head bolts are provided for the lower support strut. Replace the M6 studs with the bolts provided to secure the support. With everything in place, tighten all fasteners securely.

A T30 driver bit is required for the bolts and a 10 mm wrench for the nuts. Note: you may wish to apply antiseize coating to the bolts to reduce the likelihood of thread gauling. The mounting holes are elongated to enable some left/right movement to enable you to position the box where it is protected yet a safe distance from the fairing inner panel. Tighten all four bolts to secure holster mount to protection bar.



Rear Mount: FMS Accessory Zebra printer boxes are made from powder-coated heavy duty aluminum to resist corrosion. The mounting brackets are produced from powder-coated steel and are connected via five bolts. This does enable the case to be replaced in the event it becomes damaged. Attach the provided Velcro to the printer and the box to secure the printer from vibration / damage.

Mount the unit to 2015+ BMW R 1200 RT-P models by securing to the engine protection bar using the three M5 threaded inserts in the protection bar. The ticket book box is provided with three M5 Torx head (T25) bolts to secure to the bar. Note that these bolts have antiseize coating to reduce the likelihood of thread gauling. Tighten all three bolts to secure holster to protection bar. Note that a bit driver is very useful in tightening the center T25 bolt where clearance is very tight.



Installing Optional Key Lock:

Position the lock template on the forward side (only mount on rear side if combined with Lidar holster – check for key clearance). Using the template below, determine where on the box the lock pin should protrude to capture the printer / keep it from being removed. From that point, mark the three holes that need to be drilled. The critical size is 5 mm (13/64”) for the self-clinching studs. The hole for the lock pin can be from 17/64” to 5/16” (not critical).

Drill the holes using the stated bit sizes and debur the holes.

Insert the self-clinching studs from inside to outside and secure the lock unit to the housing with M5 washer-head nuts provided.



Maintenance Requirements:

Keep the Zebra printer box and mounting bracket clean from bugs and other road debris as you would your motorcycle. Clean with soap and water – avoid harsh chemical cleaners as they could cause corrosion. The powder coating inside the Zebra printer box may wear off at contact points which is normal. No adverse effects will occur. Touch-up stone chips on the leading edge with touch-up paint to protect powder-coated finish.

Lubricate lock unit with WD40 or similar water-displacing lubricant spray as needed.

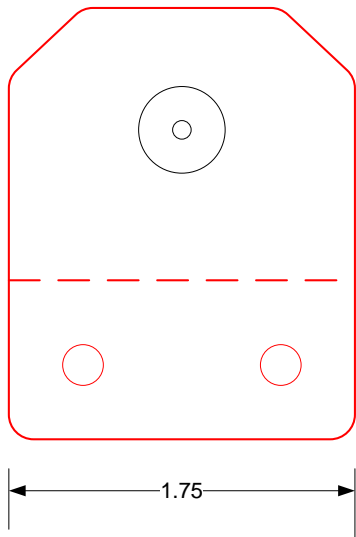
Feedback: Thank you for your purchase and we welcome your feedback as we too want to make every accessory exceed your expectations. Report any comments, suggestions, problems or concerns to FMS Solutions, LLC at info@fmsaccessories.com .

FMS Solutions, LLC Limited Warranty

FMS Solutions, LLC warrants to the first retail purchaser of new FMS Accessory products, to be free from defects in materials or workmanship, for a period of three (3) years from the original date of purchase as noted on the FMS Solutions, LLC invoice or original dealer invoice, except for paint and powder-coated finishes, which are warranted for the first 12 months only. LED lights from Fenix, Inc., Code 3, Inc. and Littlite are covered for 5 years by their manufacturer’s respective warranties – processed through FMS Solutions, LLC.

This warranty extends only to the FMS accessory and does not include: damage caused by accidents or abuse; incorrect installation; labor to diagnose, remove, repair or replace; any consequential damage or loss of use. Any FMS Accessory suspected of being defective should be returned to FMS Solutions, LLC along with a copy of proof of purchase and warranty request form available on the FMS website. FMS Solutions, LLC will determine if the FMS accessory has a warrantable defect, and if so, will repair or replace the item and return it to the sender without charge. The decision to repair or replace said item is solely the prerogative of FMS Solutions, LLC.

Note: Police motors can operate in a very rough environment since police motors are a “tool”. They can be dropped, knocked-over, etc. without concern as the officer has a job to do and determines what is necessary at any given moment. Warranty is for defects in materials or workmanship. Therefore, the ability of an item to become broken or damaged does not mean it is warranty ... it just means it is broken or damaged and in need of repair or replacement. No manufacturer warrants their products to be indestructible. Any questions should be directed to info@fmsaccessories.com .



Verify width as some printers may shrink the template image.